



**Rickmansworth
Road, Watford,
Herts, WD18 7JF**



Start **24.10.16** Finish **29.09.17** Duration **48 weeks**



Value **£3m**



Project Manager
Synergy



Client
**Watford Grammar
School for Boys**



Architect
Synergy



Form of Contract
**JCT Design & Build
2011**

WATFORD GRAMMAR SCHOOL FOR BOYS 3-STOREY STEM CENTRE

Introduction

This project involved the design & construction of a new 3 storey STEM Centre, together with mechanical and electrical services including: IT infrastructure; platform lift; localised external paving and landscaping; mains services and below-ground drainage.

Initiatives

From the outset the client wanted a 'wow' factor, which they weren't able to envisage, so we delivered this three-fold:

- Top floor balcony stretching across the full length of the building and is being used as a viewing platform over the cricket pitch

“ The success of the project has been greatly assisted by Neil's (Ashe Site Manager) presence, quiet efficiency and his knack of obtaining the best from the people he works with. The project has gone well and am pleased with the aesthetic of the building.

Wendy Goodinson
Project Manager,
Synergy



- Exposed duct work



- Quality flooring



A memorial bench for was mindfully removed to be re-polished and once reinstalled Ashe donated the paving surrounding the bench.

Social Value

Due to the close proximity of local residents we ensured constant and timely communication with neighbours keeping them fully informed of planned works, and in particular, last minute unplanned works. A meeting was also held with the local neighbourhood watch to go through the works and concerns, which established confidence in Ashe.

Project highlights

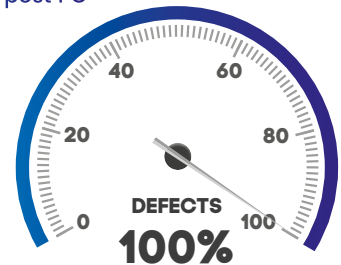
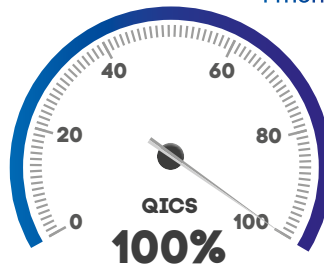


Safety



Quality

1 month post PC



A well executed project all round, built to a high level of finish within the heart of the school with minimal disruption.

Robin Blake
Managing Director,
Ashe